

SmartMeter



ADVANCED COMMUNICATION NETWORK



DATA COLLECTION ENGINE

SmartSynch, Inc.

SmartSynch's Smart Grid technology provides utilities and their customers with the unprecedented power to take control of their resource usage. SmartSynch's core product, the SmartMeter[™] System, delivers actionable intelligence (critical usage and rate data) from electricity meters via public wireless networks and the Internet.

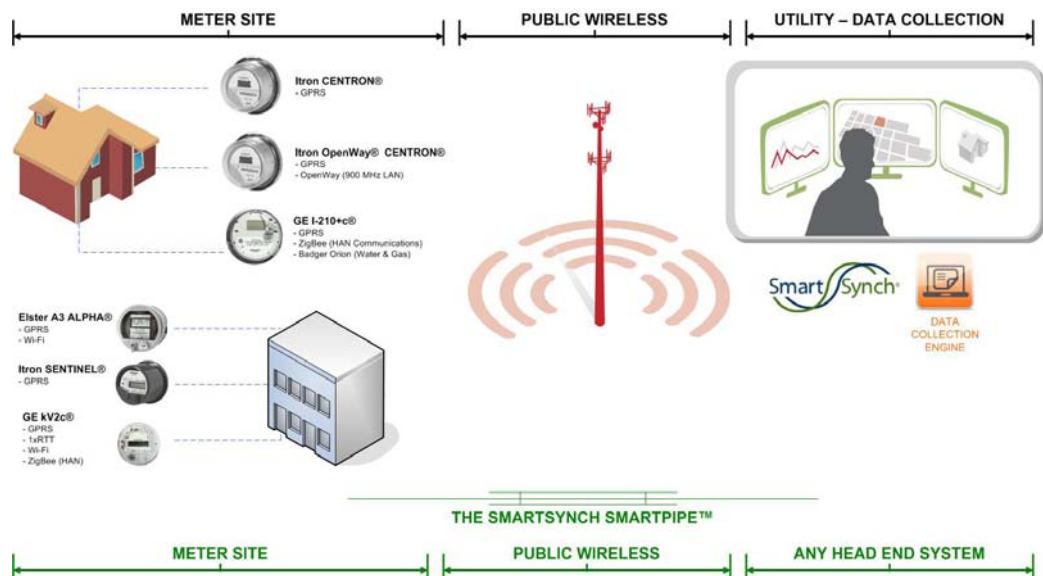
SmartSynch's Advanced Metering Infrastructure (AMI) solutions for residential, industrial, and commercial applications engage utilities and users in a real-time dialogue with the information each needs to effect change by making economically environmentally intelligent choices. The results are optimized energy consumption, reduced operating expenses, superior efficiencies, and vastly improved customer service, delivering a compelling Return on Resources (RoR) and ensuring an economic value-added contribution to utility operations.

SmartSynch's SmartMeters are faster and easier to deploy, more scalable, and highly secure, offering greater data assurance and recovery with superior accuracy to respond better to today's needs and tomorrow's opportunities than any alternative.

The SmartMeter[™] System

The SmartMeter System is an end-to-end solution that manages the access and delivery of metering information. The system includes three primary components: IP Enabled SmartMeters, the Advanced Communication Network, and the Data Collection Engine (SmartSynch's TMS or other meter manufacturer's head-end software application).

The SmartMeter[™] System Architecture



SmartSynch, Inc.
4400 Old Canton Road
Jackson, Mississippi 39211
1-888-362-1780

www.smartsynch.com



SmartSynch, Inc.

SmartMeters

A SmartMeter device is defined as a traditional electronic meter that has SmartSynch's technology embedded inside. SmartSynch technology interfaces several leading meter platforms, including the Elster A3 ALPHA®, the GE i-210+c® and kV2c® and the Itron SENTINEL® and CENTRON®. All components of the SmartMeter device are encased under-glass, resulting in the most efficient and lowest-cost installation of any product currently available. Additionally, SmartSynch utilizes advanced compression and encryption techniques to deliver superior economics and data/device security to its customers via the Advanced Communication Network.

Advanced Communication Network

SmartSynch uses public wireless networks to enable two-way communication between each SmartMeter device and the data collection engine. SmartSynch manages and provides these network solutions through relationships with major carriers and service providers.

Data Collection Engine

SmartSynch offers the Transaction Management System, a unique software application that seamlessly interfaces our advanced meters to key utility information systems (for billing, outage management, etc.), leveraging public wireless networks as the communications medium. This enterprise software system was designed using the latest software standards, is scalable to millions of points, and can be easily adapted to communicate with other devices. SmartSynch's TMS software is offered as a direct license into an IT enterprise or as a hosted solution.

SmartSynch also offers the SmartRouting Solution™ (SRS) so it can seamlessly and cost-effectively enable smart meters from different meter manufacturers to interoperate across the same or different networks while allowing users to interface to third-party C12.21 communication applications.

Key Features and Functions

- Real-Time Interval Reads and Retrieval
- Flexible Two-Way Data Retrieval
- Power Quality Monitoring
- Real-Time Power Outage and Restoration Alarms
- Meter Diagnostics, Alarms, and Alerts
- Over-The-Air SmartMeter Module Firmware Upgrade
- Demand Threshold Monitoring and Alarms
- Automated Meter Registration
- Load Profile Read/Energy Usage Retrieval
- Register/Billing Read
- Tamper Detection Alarms
- ANSI C12.19 Compliance
- Secure Remote Meter Access via Advanced Networks
- Critical Peak Pricing (A3 only)
- Meter Display Manipulation with built-in coverage status

Regulatory and Industry Specifications

SmartSynch SmartMeters are fully certified by a variety of leading industry standard testing organizations including:

- The Federal Communications Commission (FCC)
- The American National Standards Institute (ANSI)
- International Engineering Consortium (IEC)
- Industry Canada
- Measurement Canada
- Cellular Telecommunication Industry Association (CTIA) certification for GSM/GPRS

About SmartSynch: Headquartered in Jackson, Miss., SmartSynch has been developing successful Smart Grid Intelligence solutions for the utility industry since 2000. The company's clean-tech innovations in the two-way delivery of real-time energy usage data over public wireless networks, in lieu of private network build-outs, have to date simplified SmartMeter deployments for 100 major North American utilities, while enabling green-energy initiatives and delivering significantly higher Returns on Resources.

Unlike proprietary, closed-architecture solutions, SmartSynch's SmartMeters represent future-proof investments in technology. The standards-based IP connectivity enabled in every SmartMeter deployed makes them adaptable and remotely upgradable to support today's sensor and communications needs, as well as tomorrow's opportunities, better than any alternative.